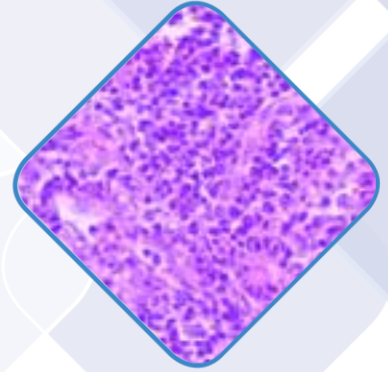
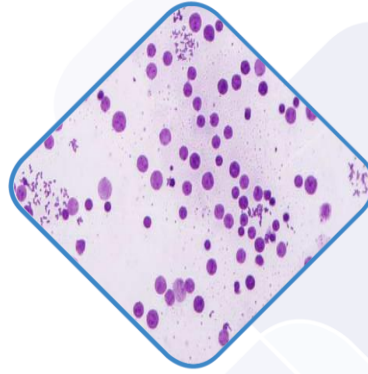


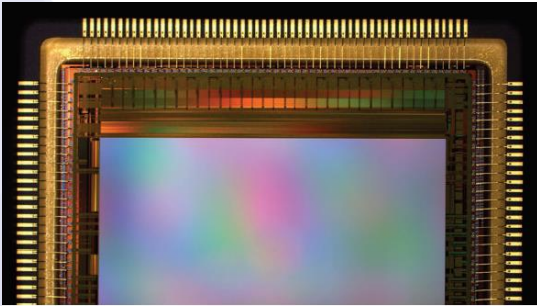
## RT 16 Series Camera



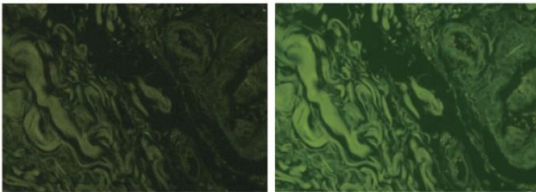


## RT 16 Series Camera

OPTA-TECH RT 16Mpx camera is equipped with an innovative FPGA-based dual core processor. The first core is responsible for the image in high resolution and quality, and the second for image transfer. Our solution ensures excellent quality images at high refresh rates.



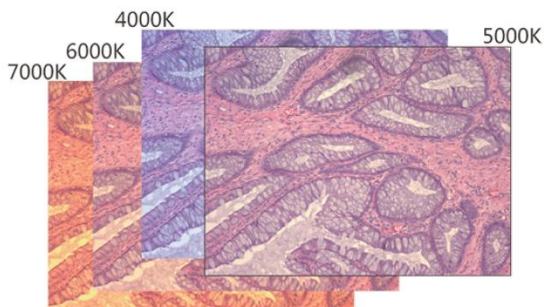
The newest 16 Mpix matrix provides incredible performance at the highest level of detail. The combination of two professional processors delivers accurate color reproduction and sharp images.



Zdjęcie przy słabym oświetleniu, bez odszumiania 3D

Zdjęcie przy słabym oświetleniu, wykonane Opta-Tech RT 16

The combination of binning technology and 3D noise reduction resulted in a surprising capability in very low light. The camera is able to provide excellent picture quality even with residual light.



OPTA-TECH RT16 has an integrated adjust the color temperature 1900-8000K. This ensures excellent white balance and incredible color fidelity, thereby eliminating the need to improve the still images.

## Technical parameters \*

<b>Sensor</b>	<ul style="list-style-type: none"> <li>- Sensor: 1/2,33" CMOS</li> <li>- Pixel size: 1,335µm x 1,335µm</li> <li>- Live preview resolution: 4Mpix – 25 fps, 16Mpix – 5fps</li> <li>- Max. Photo resolution: 4608x3456</li> <li>- Preview resolution: 2304x1728, 4608x3456</li> </ul>
<b>Image Processing</b>	<ul style="list-style-type: none"> <li>- Built-in photo processor</li> <li>- Noise reduction – Real-Time 3D denoise</li> <li>- Depth color: 24 bit</li> </ul>
<b>Microscope connection</b>	<ul style="list-style-type: none"> <li>- Mounting: C/CS</li> </ul>
<b>Image capture parameters</b>	<ul style="list-style-type: none"> <li>- Exposure: od 1 ms. – 1 s.</li> <li>- Exposure control: automatic, manual;</li> <li>- White balance: automatic, manual;</li> <li>- Image parameters: gain, saturation, gamma, color</li> <li>- Color temperature - 1900K-8000K</li> </ul>
<b>General parameters</b>	<ul style="list-style-type: none"> <li>- Housing material: metal</li> <li>- Interface: Ultra-High-Speed USB 3.0/0,5Gb/s</li> <li>- Power source: USB</li> <li>- USB cord: separate, 1,8 m</li> </ul>
<b>System requirements</b>	<ul style="list-style-type: none"> <li>- free USB 3.0 port</li> <li>- Intel i3 or equivalent processor</li> <li>- RAM: 4 GB</li> <li>- System: Windows Vista/7/8- 32/64 bit</li> <li>- CD-ROM</li> </ul>

*\* Due to constant technological progress, the parameters provided above are purely informational in nature, depict an example configuration and are liable to change.*