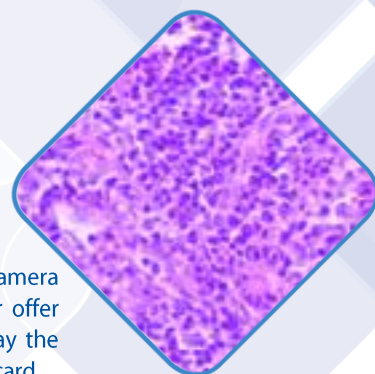
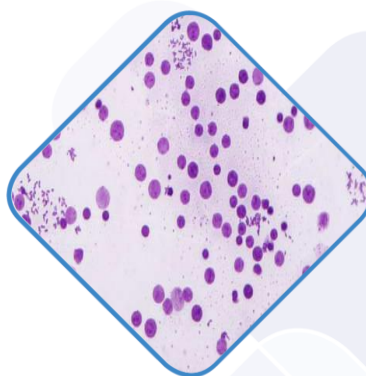


## HDMI Series Camera





## HDMI Series Camera

The OPTA-TECH HDMI CAM Microscope camera sets new standards on the microscope camera market – both in terms of image quality and overall functionality. The new addition to our offer enables the user to work not only with the camera connected to a computer, but to display the image directly on a HD monitor, TV or with a projector as well as to save the images on the SD card.

### Technical parameters \*

<b>Optical system</b>	<ul style="list-style-type: none"> <li>- sensor: 1 / 2.7" SONY</li> <li>- live preview resolution: 1920x1080 (Full HD),</li> <li>- max. photo resolution: 3840x2040 (8MP) - when working with the computer</li> <li>- video capture: 1080 – 60 fps</li> <li>- exposition time 0.001s-10 s. automatically and manually controllable</li> <li>- automatic and manual white balance</li> </ul>
<b>Connectivity</b>	<ul style="list-style-type: none"> <li>- USB 2.0, HDMI, SD card slot</li> <li>- HDMI, USB, simultaneous USB + HDMI FullHD</li> </ul>
<b>Microscope connection</b>	<ul style="list-style-type: none"> <li>- standard C-mount</li> </ul>
<b>System requirements (connected to a computer)</b>	<ul style="list-style-type: none"> <li>- free USB 2.0 port</li> <li>- Intel i3 or equivalent processor</li> <li>- RAM: 4 GB</li> <li>- System: Windows Vista/7/8- 32/64 bit</li> <li>- CD-ROM</li> </ul>
<b>Image settings</b>	<ul style="list-style-type: none"> <li>- built-in on-screen image settings menu with possibility of camera control by mouse directly connected to the camera</li> <li>- automatic parameter setup (live preview)</li> <li>- connected to a computer: OptaView IS</li> </ul>
<b>Display and recording</b>	<ul style="list-style-type: none"> <li>- live preview on a TV or HD monitor</li> <li>- simultaneous comparison on one screen of live preview of sample and of image recorded earlier</li> <li>- record movies on a memory card</li> <li>- transfer of the image to the computer</li> <li>- recording images and video formats: JPG, BMP, TIFF, AVI;</li> <li>- image HDR function (High Dynamic Range)</li> <li>- the ability to perform measurements in the preview "live" mode on sample without saving the images on the hard disk</li> <li>- image sticking function in the XY plane</li> <li>- photo colorization feature according to the standard fluorescence staining (over 200 presets for common color staining)</li> </ul>
<b>Accessories</b>	<ul style="list-style-type: none"> <li>- mouse, HDMI cable, USB cable, AC adapter</li> </ul>

*\* Due to constant technological progress, the parameters provided above are purely informational in nature, depict an example configuration and are liable to change.*