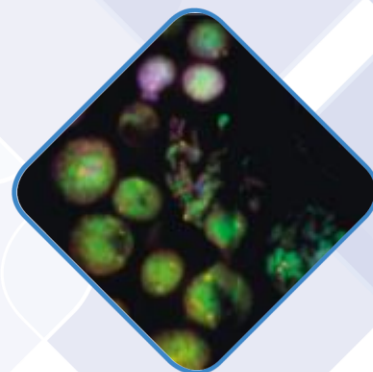
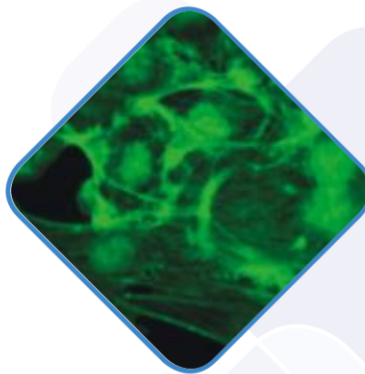


LAB 40 FL Series Microscope





LAB 40 FL Series Microscope

LAB 40 FL Fluorescent Microscope is a LAB 40 series biological microscope with additional EPI-fluorescence module. Fluorescence as a method of microscope imaging has become an invaluable tool for researchers, especially in the field of biology or medicine. Microscopes equipped with fluorescence module are most commonly used in research in the field of molecular biology. A standard EPI-fluorescence module contains: block filter set: B (blue) and G (green), fluorescent objective set, light source with mercury-vapor lamp, eye protection shield, power supply with lamp life time displayer.

Objectives: PLAN-FLUOR series plan semi-apochromatic objectives are made with high class optical materials that eliminate all aberrations. High numeric aperture allows the microscope image to have high resolution and contrast. The PLAN-FLUOR objectives ensure bright and clear image and uniformly black background in the fluorescence observation technique.

Filters: We offer a wide range of filters, e.g. for FISH or DAPI observation techniques, compatible with microscopes of other brands. We assemble block filter sets on our clients' demand, to accommodate unusual observation techniques.

Micro-manipulators: We also offer micro-manipulators for inverted microscopes that can be used in in-vitro diagnostics.

Technical parameters*

Optical system	Infinity-corrected optical system.
Viewing head	Rotary, binocular or trinocular. Eyepiece inclination: 30°. Interpupillary distance: 54-75 mm, dioptric correction +/-5 diopters.
Eyepieces	Wide field PL10X22 mm.
Revolving nosepiece	Quadruple or quintuple.
Objectives	Plan-Fluor: Infinity-corrected, semi-plan apochromatic: 4X, 10X, 40X, 100X (optional: 20X, 60X).
Condenser	N.A.1.2/0.22 SWING.
Focus adjustment	Coaxial coarse and fine focus adjustment knob. Adjustable maximum top stage position and focusing height. Movement range: 30 mm. Movement precision: 0,002 mm.

Stage	Double layers mechanical stage with anti-corrosive and anti-friction coating (dimensions: 175 x 145 mm, movement range: 76 x 50 mm, precision: 0,1 mm).
Illumination	Built-in 6V/30W or 12V/50W adjustable halogen Koehler illumination system or 5W LED illumination system.
Fluorescence	Fluorescence module with 100W HBO lamp. Or LED (B, G, UV).
Power source	Separate fluorescence power source with light bulb lifetime display (HBO) or LED power source with built-in rechargeable battery.
Filters	B, G, UV (optional).
Optional accessories	Microscope camera, image acquisition and analysis software, additional fluorescence filters.

** Due to constant technological progress, the parameters provided above are purely informational in nature, depict an example configuration and are liable to change*